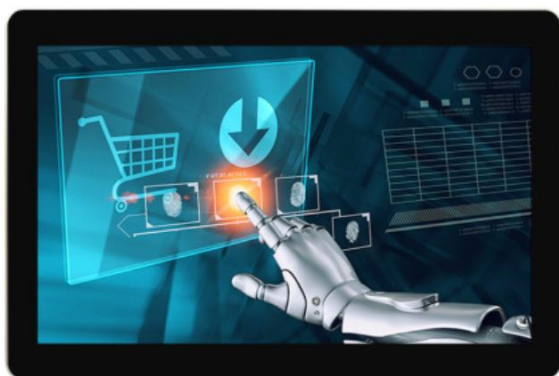


TDD-TPC-CF156

15.6" Closed Frame PCAP Touch Panel PCs



Overview

The **TDD Touch Panel PCs** include **Standard, Industrial (Open Frame Bezel-free | Rear Mount, Panel Mount, Closed Frame), Outdoor, Waterproof, Stainless Steel, Marine, Curved, Desktop POS, Commercial Displays, Medical and Custom** types, deliver a great computing solution when your application requires the PCs to be integrated into equipment. It can withstand harsh industrial environment with multiple I/O & expansion slots, rugged internal components & fanless cooling systems. Powered by Android or Intel with heavy-duty aluminum or steel enclosure, high durability & versatility for Kiosks applications from Self-service, Automated Parking, Industrial Automation, Outdoor Control, Healthcare to Gaming.

Features

- Touch thru glass enabled with PCAP supports thickness up to 5mm
- Desktop or wall mount design with **Light Aluminum Slim Frame & Back**
- IP65 (front) for water and dust protection, flexible mounting in any table, kiosk, or cabinet design

Specifications

System

Processor	Android: RK3188/RK3288/RK3566/RK3568 Quad-core Cortex-A9/A17/A55 1.6/1.8/ 2.0GHz Windows: Intel® J1900 / J4125 Quad Core 2.0 / 2.7GHz / Intel® Core™ i3 / i5 / i7 / i9 4-13 th G
Memory(RAM)	Android: 1 / 2GB(std) / 4 / 8 / 16GB; Windows: DDR3/4 2 / 4(std) / 8 / 16 / 32 / 64GB
Storage	Android: 4/8/ 16(std) /32/64GB eMMC Flash; Windows: 32/64(std)/128/256/512GB SSD/HDD

Panel

Size / Active Area (mm)	15.6"(16:9), 39.5cm, Active matrix TFT LCD (LED) / 344 mm x 194 mm
Resolution / Contrast	1920 x 1080 / 800:1
Viewing Angle	Horizontal: 89° or 178° total / Vertical: 89° or 178° total
Color Depth/Brightness	16.7 million / 250 nits
Response Time / Freq	30 (Typ.)(Tr+Td) ms / Horizontal: 30 - 60 KHz / Vertical: 50 - 75 Hz

Touch

Touch Technology / OS	PCAP (Projected Capacitive) - 10 Touch Capacity / Windows / Android / Linux / Mac
Surface Treatment	Water, Dust & Vandal proof; Optional: Anti-glare, Anti-fingerprint, Anti-smudge, Anti-bacterial

I / O Ports

Android	USB x4 / COM x2 / HDMI x1 / LAN x1 / WIFI x1 / DC x1 / TF-CARD x1 / Audio x1
Windows	USB x4 / COM x2 / VGA x1 / HDMI x1 / LAN x1 / WIFI x1 / DC x1 / Audio x1 / Mic x1

Power

Supply / Consumption: 100-240 VAC / 12VDC +/- 5%; 20W typical, 1.5W sleep, 0.5W off

Mechanical

Product Dimensions: 386 x 243 x 49mm(**A**)|43(**S**)mm / Weight(Unpacked/Packed): 1.5 / 2.6kg
Box Dimensions: 520 x 188 x 375mm / VESA Mounting: 75 x 75 / 100 x 100mm

Environmental

Operating / Storage Temperature: -10°C to 50°C / -20°C to 60°C

Accessories

Power adapter / cable, wall mount brackets w/screws (opt.)

Others

MTBF / Warranty / Enclosure Color: 50,000 hours demonstrated / 1-year / black | silver
Ready for Use: 24/7, **A** = Aluminum Back, **S** = Steel Back in above "**Mechanical**"

* **TDD** (www.tddtouch.com, sales@tddtouch.com) reserves the right to change specifications without prior notice.